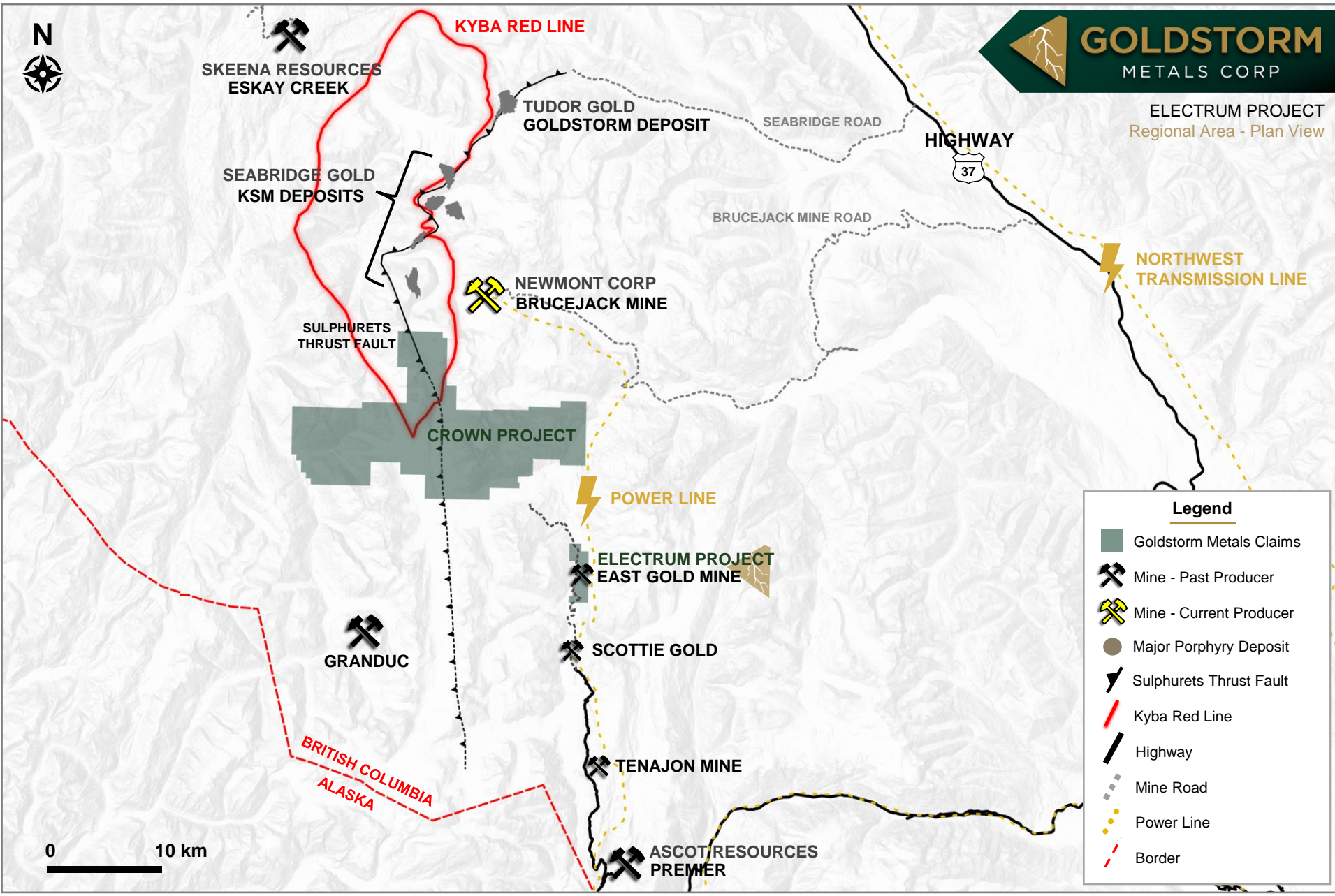




ELECTRUM PROJECT
Regional Area - Plan View



Legend

- Goldstorm Metals Claims
- Mine - Past Producer
- Mine - Current Producer
- Major Porphyry Deposit
- Sulphurets Thrust Fault
- Kyba Red Line
- Highway
- Mine Road
- Power Line
- Border

SKEENA RESOURCES
ESKAY CREEK

KYBA RED LINE

TUDOR GOLD
GOLDSTORM DEPOSIT

SEABRIDGE ROAD

HIGHWAY
37

SEABRIDGE GOLD
KSM DEPOSITS

BRUCEJACK MINE ROAD

NORTHWEST
TRANSMISSION LINE

NEWMONT CORP
BRUCEJACK MINE

SULPHURETS
THRUST FAULT

CROWN PROJECT

POWER LINE

ELECTRUM PROJECT
EAST GOLD MINE

GRANDUC

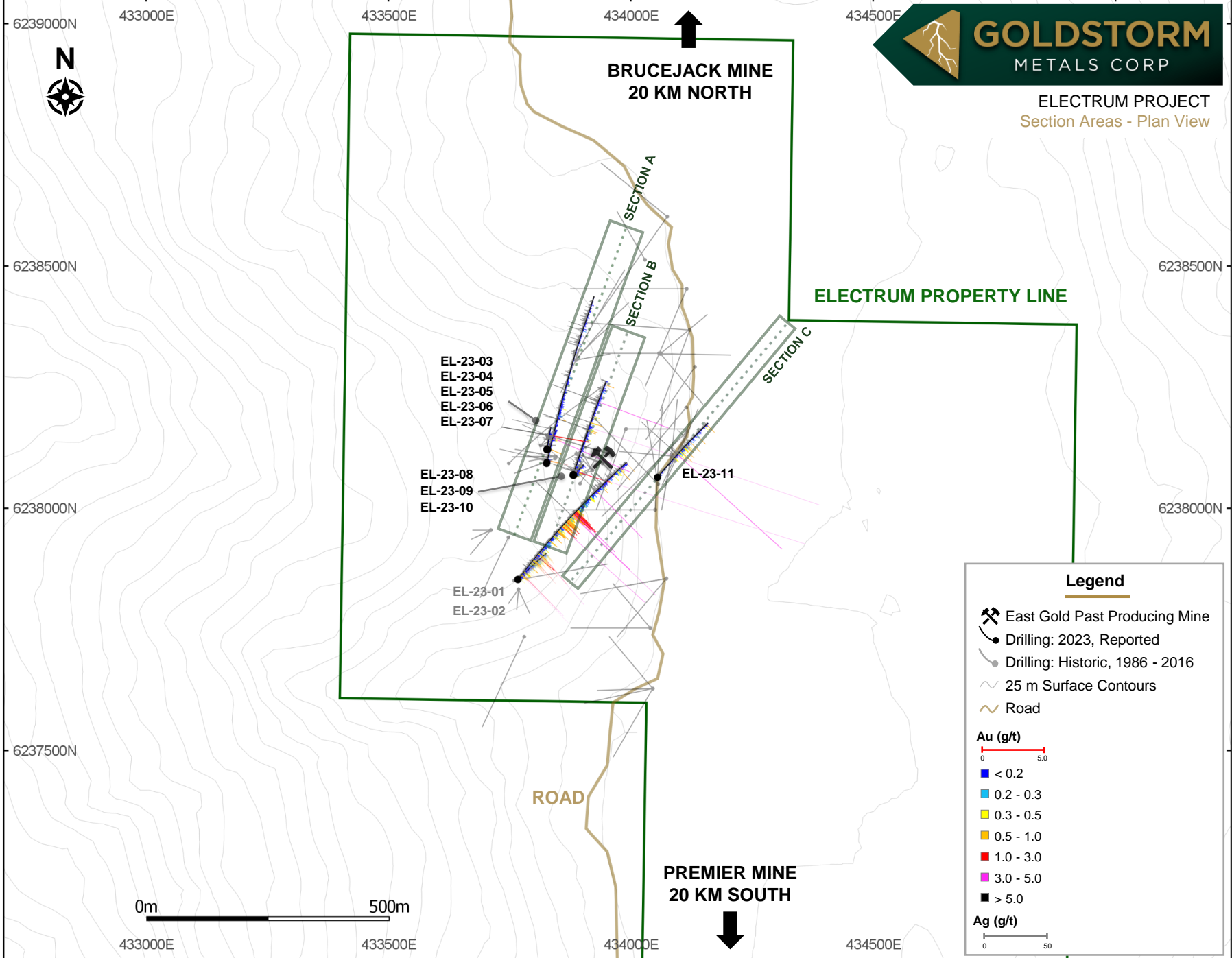
SCOTTIE GOLD

TENAJON MINE

BRITISH COLUMBIA
ALASKA

ASCOT/RESOURCES
PREMER

0 10 km



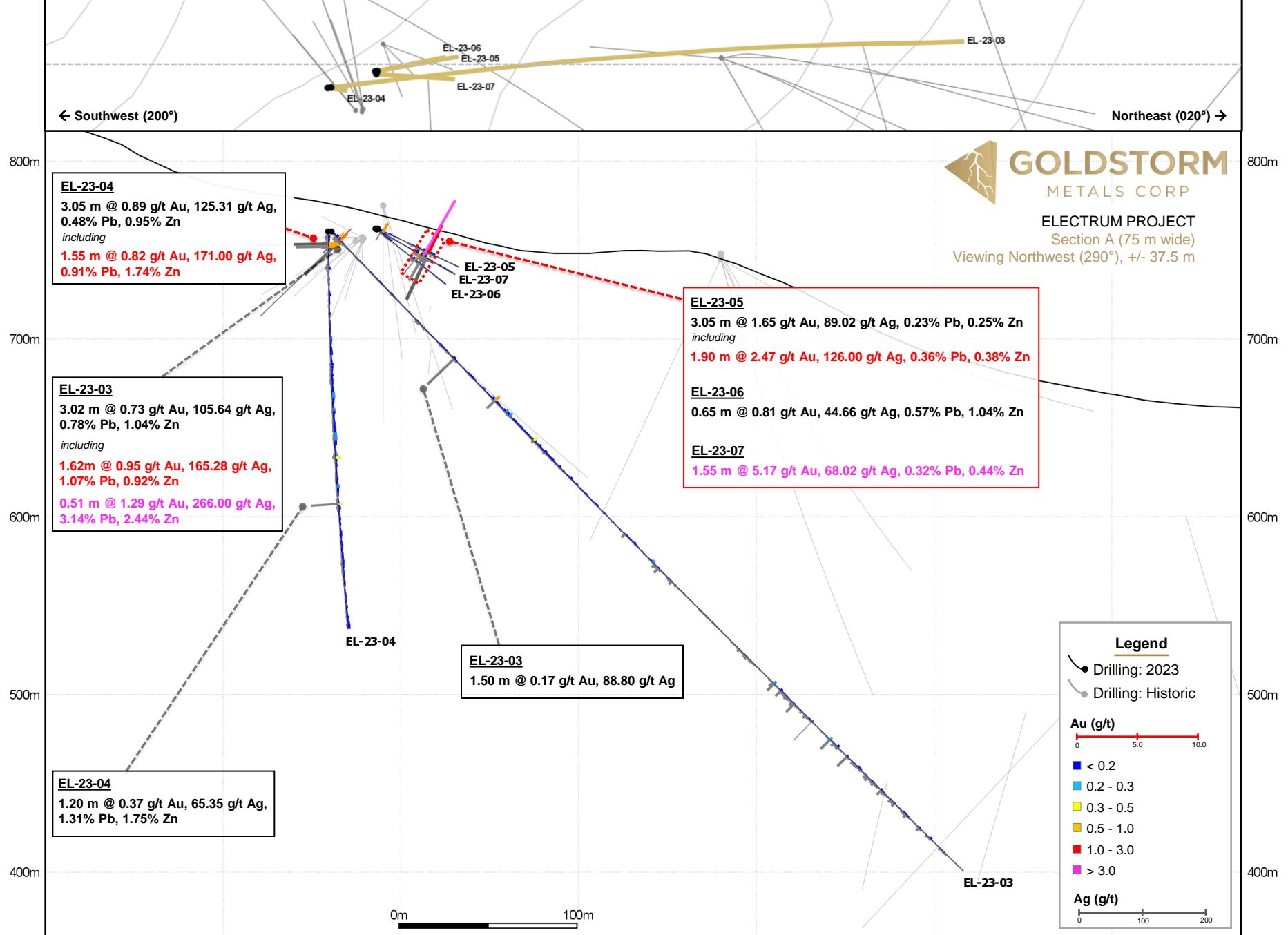
← Southwest (200°)

Northeast (020°) →



GOLDSTORM
METALS CORP

ELECTRUM PROJECT
Section A (75 m wide)
Viewing Northwest (290°), +/- 37.5 m



EL-23-04
3.05 m @ 0.89 g/t Au, 125.31 g/t Ag,
0.48% Pb, 0.95% Zn
including
1.55 m @ 0.82 g/t Au, 171.00 g/t Ag,
0.91% Pb, 1.74% Zn

EL-23-03
3.02 m @ 0.73 g/t Au, 105.64 g/t Ag,
0.78% Pb, 1.04% Zn
including
1.62m @ 0.95 g/t Au, 165.28 g/t Ag,
1.07% Pb, 0.92% Zn
0.51 m @ 1.29 g/t Au, 266.00 g/t Ag,
3.14% Pb, 2.44% Zn

EL-23-04
1.20 m @ 0.37 g/t Au, 65.35 g/t Ag,
1.31% Pb, 1.75% Zn

EL-23-05
EL-23-07
EL-23-06

EL-23-05
3.05 m @ 1.65 g/t Au, 89.02 g/t Ag, 0.23% Pb, 0.25% Zn
including
1.90 m @ 2.47 g/t Au, 126.00 g/t Ag, 0.36% Pb, 0.38% Zn

EL-23-06
0.65 m @ 0.81 g/t Au, 44.66 g/t Ag, 0.57% Pb, 1.04% Zn

EL-23-07
1.55 m @ 5.17 g/t Au, 68.02 g/t Ag, 0.32% Pb, 0.44% Zn

EL-23-03
1.50 m @ 0.17 g/t Au, 88.80 g/t Ag

Legend

- Drilling: 2023
- Drilling: Historic

Au (g/t)

- < 0.2
- 0.2 - 0.3
- 0.3 - 0.5
- 0.5 - 1.0
- 1.0 - 3.0
- > 3.0

Ag (g/t)

- 0 - 100
- 100 - 200

← Southwest (200°)

Northeast (020°) →



GOLDSTORM

METALS CORP

ELECTRUM PROJECT

Section B (75 m wide)

Viewing Northwest (290°), +/- 37.5 m

800m

800m

700m

700m

600m

600m

EL-23-10
 6.00 m @ 0.23 g/t Au, 26.77 g/t Ag
including
 1.50 m @ 0.19 g/t Au, 66.99 g/t Ag

EL-23-09
 1.50 m @ 1.21 g/t Au, 32.07 g/t Ag
 1.50 m @ 1.38 g/t Au, 6.97 g/t Ag

1.50 m @ 0.98 g/t Au, 46.79 g/t Ag

EL-23-08
 4.50 m @ 27.00 g/t Au, 111.09 g/t Ag
including
 2.10 m @ 57.34 g/t Au, 214.27 g/t Ag
 0.50 m @ 233.50 g/t Au, 756.00 g/t Ag

EL-23-08
 15.00 m @ 2.78 g/t Au, 43.97 g/t Ag
including
 1.50 m @ 0.29 g/t Au, 405.00 g/t Ag
 0.50 m @ 75.30 g/t Au, 19.27 g/t Ag

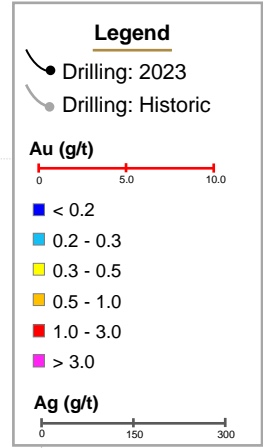
1.50 m @ 0.78 g/t Au, 58.10 g/t Ag

1.50 m @ 4.59 g/t Au, 234.00 g/t Ag

EL-23-01
 111.00 m @ 0.77 g/t Au, 4.43 g/t Ag
 61.50 m @ 1.13 g/t Au, 6.02 g/t Ag
 17.30 m @ 2.07 g/t Au, 3.74 g/t Ag

1.50 m @ 1.03 g/t Au, 6.05 g/t Ag

GSTM Press Release
October 4, 2023



x: 433832

x: 433866

x: 433900

x: 433935

x: 433969

y: 6237921

y: 6238015

y: 6238109

y: 6238203

y: 6238297

← Southwest (220°)

Northeast (040°) →



GOLDSTORM

METALS CORP

ELECTRUM PROJECT

Section C (50 m wide)

Viewing Northwest (310°), +/- 25.0 m

700m

700m

600m

600m

500m

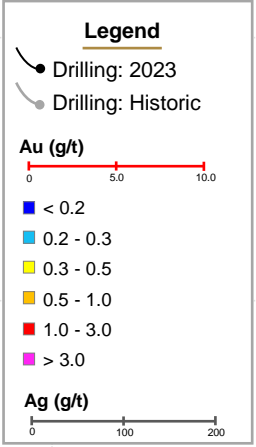
500m

400m

400m

EL-23-11

17.75 m @ 1.17 g/t Au, 29.40 g/t Ag, 0.05% Pb, 0.30% Zn
including
 7.35 m @ 2.28 g/t Au, 67.86 g/t Ag, 0.10% Pb, 0.68% Zn
 1.75 m @ 8.70 g/t Au, 238.0 g/t Ag, 0.15% Pb, 0.39% Zn



x: 433880
y: 6237854

x: 433944
y: 6237930

x: 434008
y: 6238007

x: 434072
y: 6238084

x: 434137
y: 6238160

x: 434201
y: 6238237

x: 434265
y: 6238314